

Ph.D. in Education Policy Virtual Town Hall

Gema Zamarro, Ph.D.

Patrick J. Wolf, Ph.D.

Tom Bennett, J.D., Ed.D

November 7, 2023



UNIVERSITY OF
ARKANSAS

The Department of
Education Reform



Welcome!



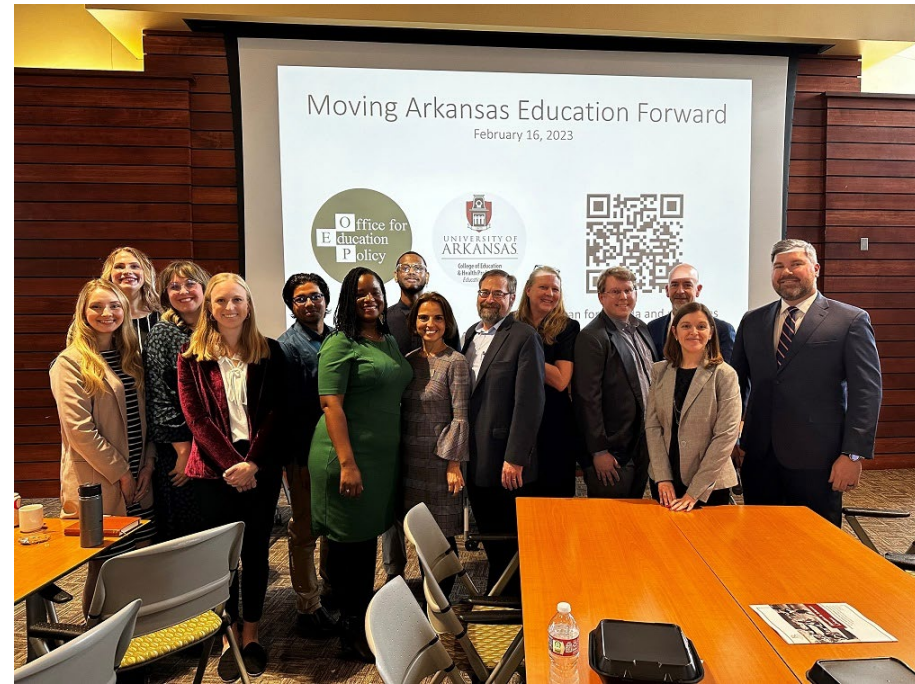
Agenda

- **Welcome to our Virtual Town Hall - Dr. Gema Zamarro**
- **Introduction to our department and Ph.D. program - Dr. Patrick Wolf**
- **Our Ph.D. program and application process - Dr. Tom Bennett**
- **Q&A in small breakout groups with students from the program**
- **General Q&A**



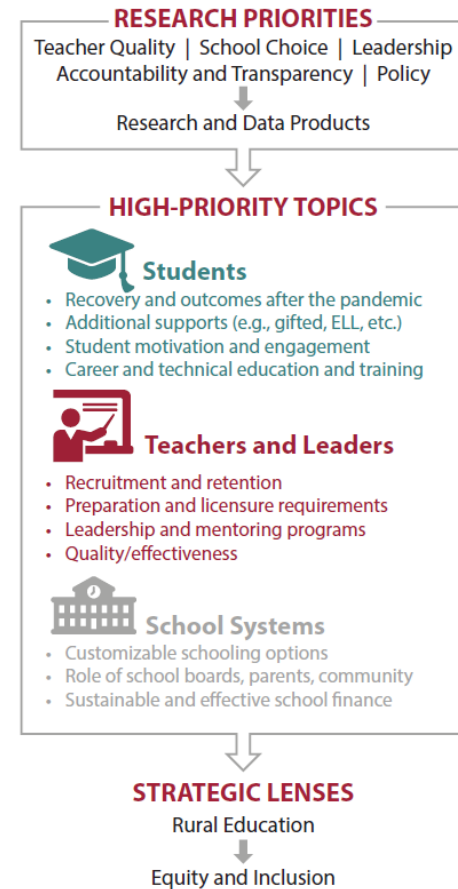
Why pursue an Education Policy Ph.D.?

- **Have fun** developing your data analysis and research skills, collaborating with talented colleagues, and working with rich datasets.
- **Build a rewarding career** in public service, academia, non-profits, philanthropy, or think tanks.
- **Make a difference!** Use your analytical skills and expertise to contribute to your community and improve people's lives through education policy.



Why choose the University of Arkansas's Department of Education Reform?

- We are a **top five program** nationally in Educational Evaluation & Research.
- Our doctoral program has several **distinctive characteristics designed to promote student success**, including:
 - Rigorous training in data analysis, writing, and presenting;
 - Close faculty mentorship;
 - Generous resources for student support;
 - Varied research topics and expertise;
 - Access to high-quality data;
 - Reform orientation; and
 - Free exchange of ideas in a diverse, respectful, and collegial environment.
- Our students **graduate and find influential, rewarding jobs**.
 - 75% 4-year completion rate
 - 100% job placement rate





Program Overview

- During our 4-year program, students participate in courses and collaborate on major research projects to develop the skills and expertise necessary to use research evidence to have a positive impact on education policy.
 - Students take 72 hours of coursework, including 18 dissertation hours.
 - From their very first year, students participate in high-impact, data-driven research projects.
 - Students gain experience collaborating and communicating with policymakers and practitioners.
 - We provide ample opportunities and support for students to present their research at national and international conferences.
- Our program prepares scholars for P-20 education policy careers in public service, academia, non-profits, philanthropy, and think tanks.



Generous funding and support is available for students

- We have provided funding to ***every student*** in our doctoral program.
- Funding is renewable for up to 4 years and includes:
 - free tuition,
 - subsidized health insurance, and
 - aid packages up to \$30,000 or \$40,000 per year.
- And we provide students with all textbooks for required courses!



Start your application for our education policy doctoral program today!

- We are accepting applications now for our 2024 class.
- Below are key dates and application instructions.
 - Arrange to take the GRE **before December 2023**.
 - **December 15th** is the recommended application deadline.
 - Submit an online application to the Graduate School:
 - <https://waprd.uark.edu/web-apps/uark/apply/>
 - More details available at:
 - <https://edre.uark.edu/phd-education-policy/admission-instructions.php>
 - **January 10th** is the final deadline for all application materials to be received by the University of Arkansas Graduate School and the Department of Education Reform.

Graduate Record Examination (GRE)

- Required for admission and cannot be waived.
- Must be taken within the past five years.
- Must be sent directly from the Educational Testing Service to the University of Arkansas.
- Successful applicants typically have a combined GRE score over 300 and an analytic writing score of 4.0.
- We also consider quantitative GRE scores given the quantitative nature of our program.

English Proficiency Tests

- A passing score is required for admission and cannot be waived unless:
 - English is your native language, or
 - You have an earned bachelor's or master's degree in U.S. institutions or in foreign institutions where the official and native language is English.
- More information about these tests can be found here:
<https://international-admissions.uark.edu/graduate-studies/english-proficiency.php>



Graduate Assistant (GA) Compensation Package

- Students who are awarded a Graduate Assistantship receive:
 - a full tuition waiver;
 - health insurance benefits; and,
 - a current annual stipend of \$19,095.
- GA students are required to perform 20 hours of research work per week.



Doctoral Fellowships

- The Department can also nominate successful applicants for competitive merit-based awards, called fellowships.
- A Distinguished Doctoral Fellowship stipend is \$22,000 per year.
- Doctoral Academy Fellowship stipends are \$12,000 per year.
- Fellowships may be renewed for up to three years following the initial year while maintaining normal progress in the degree program.

Applying to our Graduate School

- If you are ready to apply, your first step is to apply to our University of Arkansas Graduate School. An online application can be accessed here: <https://applygsie.uark.edu/apply/>

Application Materials and Fees

- You will need the following for submission to the Graduate School:
 - GRE test scores;
 - Official transcripts of all college- and university-level coursework sent directly from the registrars of the institutions you have attended;
 - Unofficial transcripts can be submitted for evaluation.
 - At least two letters of recommendation;

Application Materials and Fees (Cont.)

- You will need the following for submission to the Graduate School:
 - A departmental application;
 - A statement of purpose of up to 1,000 words describing your background and reasons for your interest in research related to education policy and reform;
 - Your curriculum vitae; and,
 - An application fee of \$60.00.
 - Cannot be waived and is non-refundable.

Letters of Recommendation

- The admissions website has a function that allows you to invite people to upload letters of recommendation.
- These letters should be written by people (supervisors, professors, etc.) who are able to evaluate your capability to undertake a demanding doctoral program in education policy.
- Please ensure that all letters are printed on the person's institutional letterhead and are signed by hand.

Application Deadlines

- The Ph.D. in Education Policy only takes in students once a year, to begin in August.
- To be eligible for admission and fellowship consideration, all application materials must be received by the University of Arkansas Graduate School and the Department of Education Reform no later than **January 10th** in the year of intended entry (to avoid delays, we encourage all applicants to have their application completed by the middle of December).
- Applications for admission received after January 10th will be evaluated only on a space-available basis at the discretion of the department.

Thank you!

- For more information you can visit:
<https://edre.uark.edu/phd-education-policy/index.php>
- Follow us!



@ua_edreform

Thank You!

Patrick J. Wolf, Ph.D. – Department Head

pwolf@uark.edu

(479) 575-2084

Gema Zamarro, Ph.D. – Graduate Director

gzamarro@uark.edu

(479) 575-7024

Tom Bennett, J.D., Ed.D – Graduate Coordinator

tabennet@uark.edu

(479) 575-5597